

# The five core elements of the Aboriginal and Torres Strait Islander Child Placement Principle

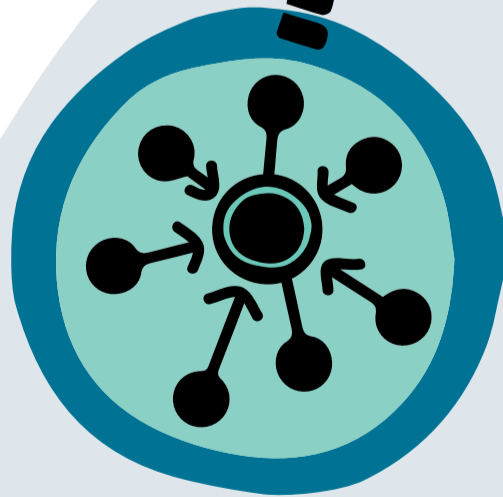
## PREVENTION

Protecting children's rights to grow up in family, community and culture by supporting families to care safely for their children.



## CONNECTION

Maintaining and supporting connections to family, community, culture and country for children in out-of-home care.



## PARTICIPATION

Ensuring the participation of children, parents and family members in decisions regarding the safety belonging and wellbeing of their children.



## PARTNERSHIP

Ensuring the participation of community representatives in service design, delivery and individual case decisions.



## PLACEMENT

Placing children in out-of-home care in accordance with the established ATSICPP placement hierarchy.



ChildProtectionPeak



SNAICC  
National Voice for our Children



Queensland  
Government